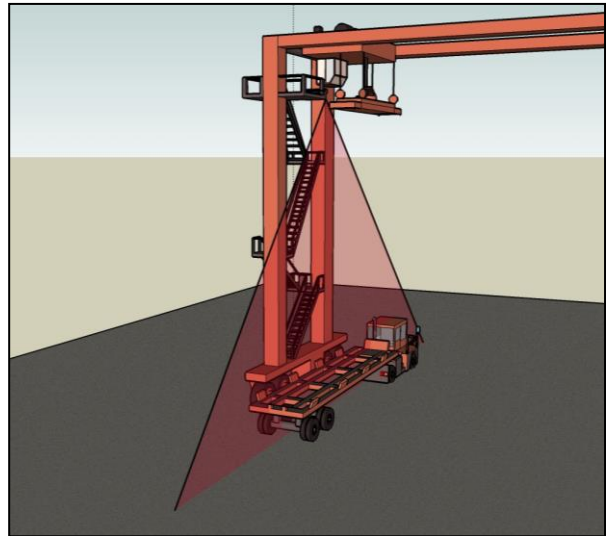


The Maxview Vehicle Guidance™ Systems

**Laser-based container handling
vehicle detection and position
measurement systems**

*Increase your container crane
productivity with **Maxview**
Vehicle Guidance™ systems.*



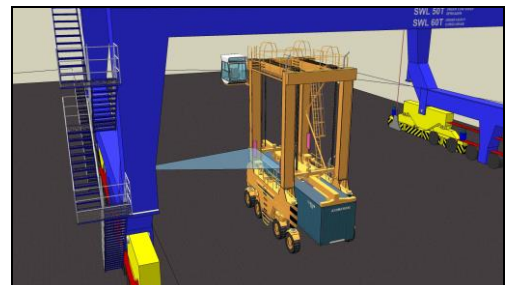
Features

- **Detects and Measures the Position of Container Handling Equipment under the Crane** > Including Bomb Carts, Straddle Carriers, Shuttle Trucks, and Street Chassis
- **Measures the Position of Containers on Bomb Carts** > For exact alignment of containers with the crane, regardless of their relative position on the Bomb Cart.
- **Auto-Alignment of 20 ft Containers** > 20 ft containers are automatically positioned at the correct location based on the vehicle load condition and crane cycle state.
- **Lane Position Measurement** > Vehicle and Container positions are measured in two dimensions, including lane position.
- **Integrated Display for Vehicle Driver** > LED-type traffic signals are standard; other options are available.
- **Automatic Lane Selection** > The Display for vehicle driver is automatically associated with the active lane during normal operations.
- **Operates in the Backreach** > Optional
- **Minimal Number of Sensors** > System is easy to install and maintain.

Benefits

The **Maxview Vehicle Guidance™** systems provide the following benefits in your operation:

- **Increased Operational Productivity** > Rapid and accurate vehicle and container pre-positioning under the crane reduces crane cycle time.
- **Improved Container and Asset Tracking** The vehicle/container position and lane can optionally be reported to upstream tracking and control systems, such as the Terminal Operating System.
- **Enhanced Crane Semi-Automation** > via integration of vehicle/container position with automatic control.
- **Increased Labor Productivity** > Less reliance on the diligence of any ground-based spotter under the crane.

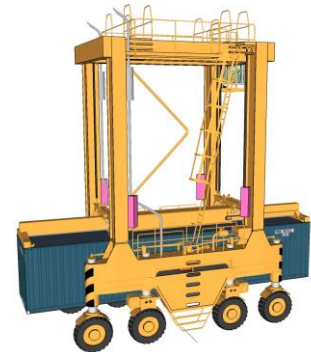


The Maxview Vehicle Guidance™ System

How it works

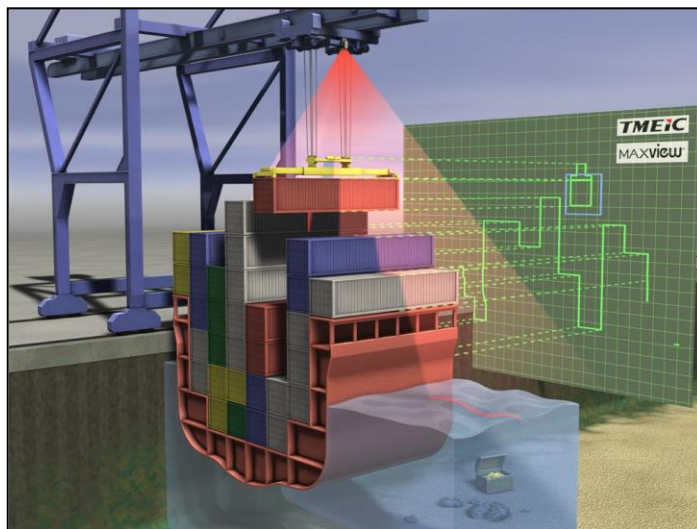
Maxview Vehicle Guidance™ systems utilize laser scanners and **Maxview®** software modules to measure and continuously update the position of the vehicle/container relative to the crane.

- The Vehicle/Container position is continuously measured by laser scanners. These measurements are used to control the Driver Display(s) based on user-configurable geometrical parameters.
- Accurate measurement of terminal-based container handling equipment is achieved via fixed, passive, laser reference targets.
- One laser scanner per lane is applied for measurement of trucks.
- One or two laser scanners per crane are applied for measurement of Straddle Carriers.



Design Features

- **Proven Design** > The design is based on TMEIC's extensive experience with **Maxview®** and crane automation systems in the container handling and other heavy material handling industries.
- **All-Weather Operation** > **Maxview®** systems are designed for and have been proven in the harsh weather conditions found at maritime terminals, including fog and heavy rain and snow.
- **Easy to install and maintain** > Simple set-up, with "hands off" operation and minimal preventative maintenance.
- **Open System Design** > utilizing the latest open-system technologies and a minimum of proprietary components to provide a full-featured, yet simple, system that can be easily extended to meet your needs, now and in the future.
- **Flexible Design** > allowing for a high degree of customization based on the specific needs of the operation and existing crane control equipment.



TMEiC
We drive industry

TMEIC Corporation Americas

Office: 1325 Electric Road, Roanoke, VA, USA

Mail: 2060 Cook Drive, Salem, VA 24153

Telephone: +1 540-283-2250

eMail: mh@tmeic.com

TMEIC Corporation Americas is a group company of Toshiba Mitsubishi-Electric Industrial Systems Corporation (TMEIC).