

TMEiC
We drive industry



CORPORATE PROFILE

TOSHIBA MITSUBISHI-ELECTRIC INDUSTRIAL SYSTEMS CORPORATION

Toshiba Mitsubishi-Electric Industrial Systems Corporation (TMEiC) was established in October 2003 through the integration of Toshiba Corporation and Mitsubishi Electric Corporation industrial system businesses. We seek to provide our products, technologies and services for customers in the renewable energy field as well as leverage our system engineering, power electronics and rotating machinery technologies. Always moving forward!

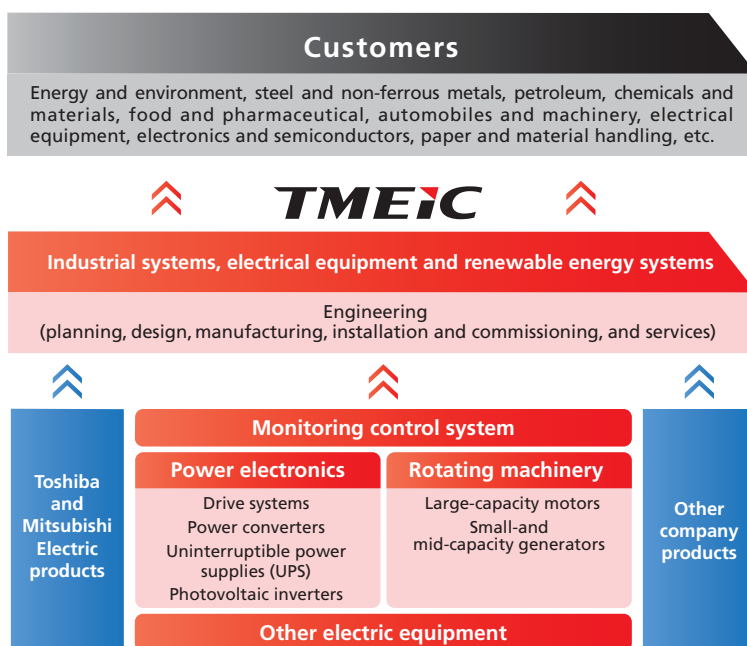
The Sustainable Development Goals (SDGs) were adopted by United Nations Member States in 2015. Aligned with our business and society, TMEiC is committed to achieving carbon neutrality on a global scale.

"We drive industry" and will continue to play an important role toward realizing a sustainable society through our corporate activities.

Scope of Business and Business Structure

- Sales of industrial systems and electric equipment mainly for manufacturing plants, green energy systems including renewable energy systems and engineering, installation and servicing

- Development and manufacturing of monitoring control systems for manufacturing plants and renewable energy plants, as well as power electronics equipment and rotating machinery



Products and Systems

- Industrial Systems and Products (automation systems, motor and drive systems and power distribution systems)
- Renewable Energy Systems (photovoltaic power generation / wind power generation / energy storage, etc.)
- Power Electronics Systems (drive systems, uninterruptible power supplies [UPS], power converters, inverters)
- Rotating Machinery Systems (large-capacity motors and small- and medium-capacity generators)



Drive Systems



Premium Efficiency Series Motors



Inverters for Utility-scale Solar Power Generation Systems

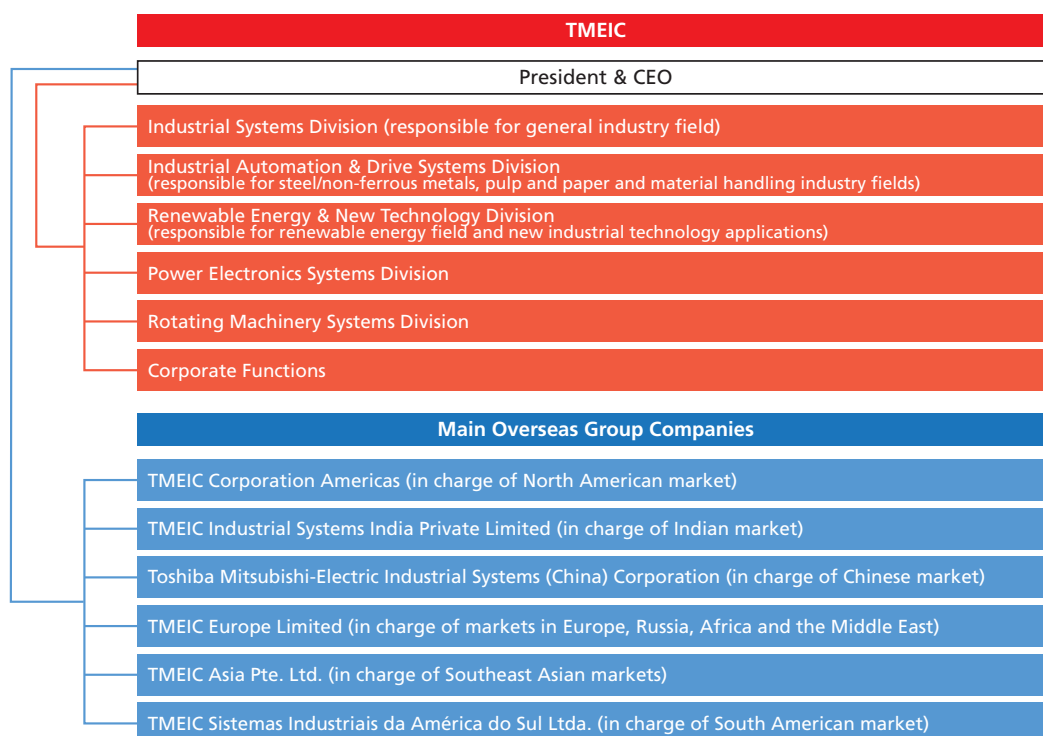


Ultra-high-speed, Large-capacity Motors

TOSHIBA MITSUBISHI-ELECTRIC INDUSTRIAL SYSTEMS CORPORATION

Organization

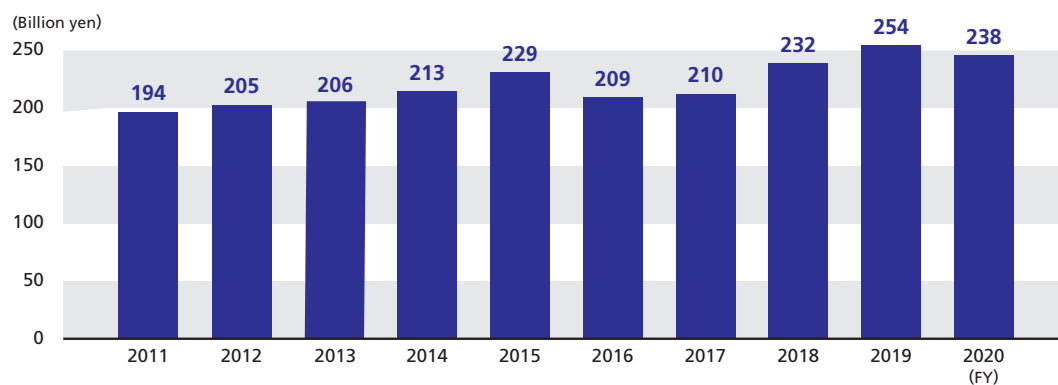
- Global expansion of business operations encompasses 17 Group companies and 9 manufacturing bases in 15 countries and regions worldwide.



Corporate Data

Establishment	October 1, 2003	Sales bases in Japan	Tokyo, Sapporo, Chiba, Toyama, Nagoya, Osaka, Okayama, Hiroshima, Shunan, Takamatsu, Fukuoka, Nagasaki
Capital	15 billion yen	Manufacturing bases in Japan	Tokyo (Fuchu), Yokohama (Keihin), Kobe, Nagasaki
Equity stake	Toshiba 50%; Mitsubishi Electric 50%	Group companies	Japan: 1; Overseas: 15 (including 1 affiliate)
President & CEO	Masahiko Yamawaki	Number of employees	4,255 (worldwide as of March 31, 2021)
Head office	TOKYO SQUARE GARDEN, 3-1-1 Kyobashi, Chuo-ku, Tokyo 104-0031, Japan		

Global Net Sales



TOSHIBA MITSUBISHI-ELECTRIC INDUSTRIAL SYSTEMS CORPORATION

Network in Japan and Overseas

● Manufacturing bases ● Sales bases

