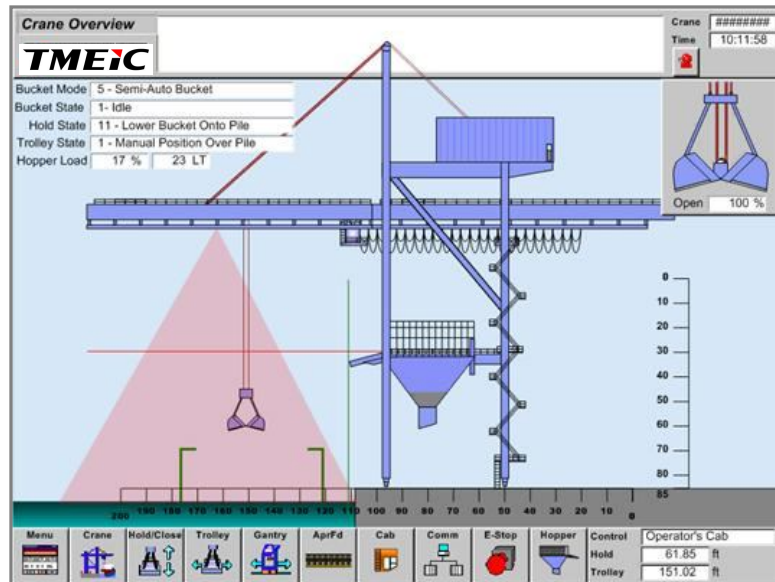


The Maxview Smart Dig™ System

**Laser-based profile measurement
and operator assist system**

*Reduce damage and operating
noise, and increase your unloader
crane productivity with the
Maxview Smart Dig™ system.*



Features

- **Auto-detect of working area in the vessel** > The **Maxview®** system measures the extents of the vessel hull and deck to estimate the working area for the bucket.
- **Material pile profile measurement** > The **Maxview®** system measures the profile of the material pile on the vessel and reports the peak as the working target for the bucket during unloading.
- **Equipment profile measurement** > The **Maxview®** system measures the profile of the crane structure under the trolley, including the hopper and the spill plate.
- **Vessel profile measurement** > The **Maxview®** system measures the profile of the vessel, including hatch covers and any superstructure on the centerline of the crane.
- **Hopper full detection** > The **Maxview®** system reports the profile of the material in the hopper.
- **Spill plate position detection** > The **Maxview®** system reports the status of the spill plate.

Benefits

- When used with the **Maxspeed®** crane control system, the **Maxview Smart Dig™** system provides the following:
- **Increased Productivity** > The **Maxview®** system measurements allow the **Maxspeed®** Auto-Dig function to take the optimal path to the target location at verified safe heights above the measured profile of the load material, vessel and equipment.
- **Reduced wear and tear on equipment and wire ropes** > The hoist speed is limited as the bucket approaches the equipment and material profile to avoid damaging contact.
- **Reduced vessel damage** > The hoist speed is limited as the bucket approaches the vessel profile to avoid damaging contact.
- **Reduced material waste and clean-up** > Reduced opportunities for material spillage due to missing the hopper, dumping in a full hopper, or dumping with an improperly configured spill plate.
- **Reduced operating noise level** by softer handling of the bucket and material.

The Maxview Smart Dig™ System

How it works

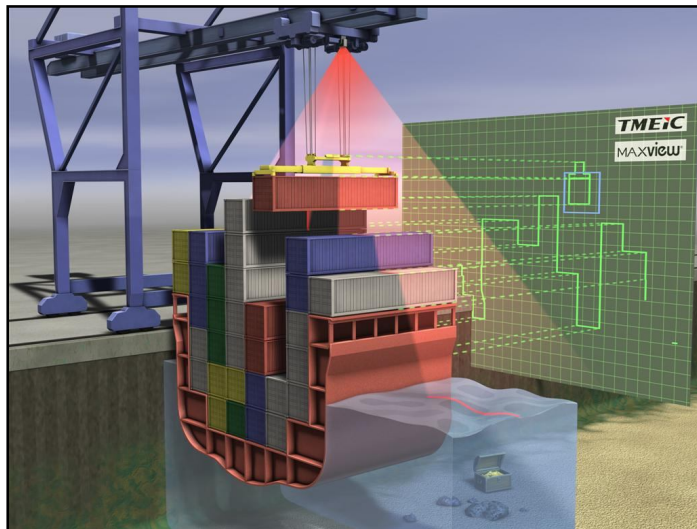
The **Maxview Smart Dig™** system uses a laser scanner and **Maxview®** software modules to measure and continuously update the profile of material, the vessel, and crane equipment and other obstructions under the crane.

- The profile is updated continuously during normal operations.
- The **Maxspeed®** crane control system uses the **Maxview Smart Dig™** measurements to enhance the Auto-Dig functions.
- These slowdowns limit the crane speed when, and only when, hard contact is imminent. Therefore crane productivity is not reduced when the **Maxview Smart Dig™** system is active.
- The **Maxview Smart Dig™** Crane Management System (CMS) screen is provided for the crane operator to increase his or her visual awareness of the profile of material and equipment below the crane. This CMS screen also indicates the system status.



Design Features

- **Proven Design** > The design is based on TMEIC's extensive experience with **Maxview®** and crane automation systems in the container handling and other heavy material handling industries.
- **Easy to install and maintain** > Simple set-up, with "hands off" operation and minimal preventative maintenance.
- **Open System Design**, utilizing the latest open-system technologies and a minimum of proprietary components to provide a full-featured, yet simple, system that can be easily extended to meet your needs, now and in the future.
- **Flexible Design**, allowing for a high degree of customization based on the specific needs of the operation and existing crane control equipment.



TMEiC
We drive industry

TMEIC Corporation

Office: 1325 Electric Road, Roanoke, VA, USA

Mail: 2060 Cook Drive, Salem, VA 24153

Telephone: +1 540-283-2250

eMail: mh@tmeic.com

TMEIC Corporation is a group company of Toshiba Mitsubishi-Electric Industrial Systems Corporation (TMEIC).